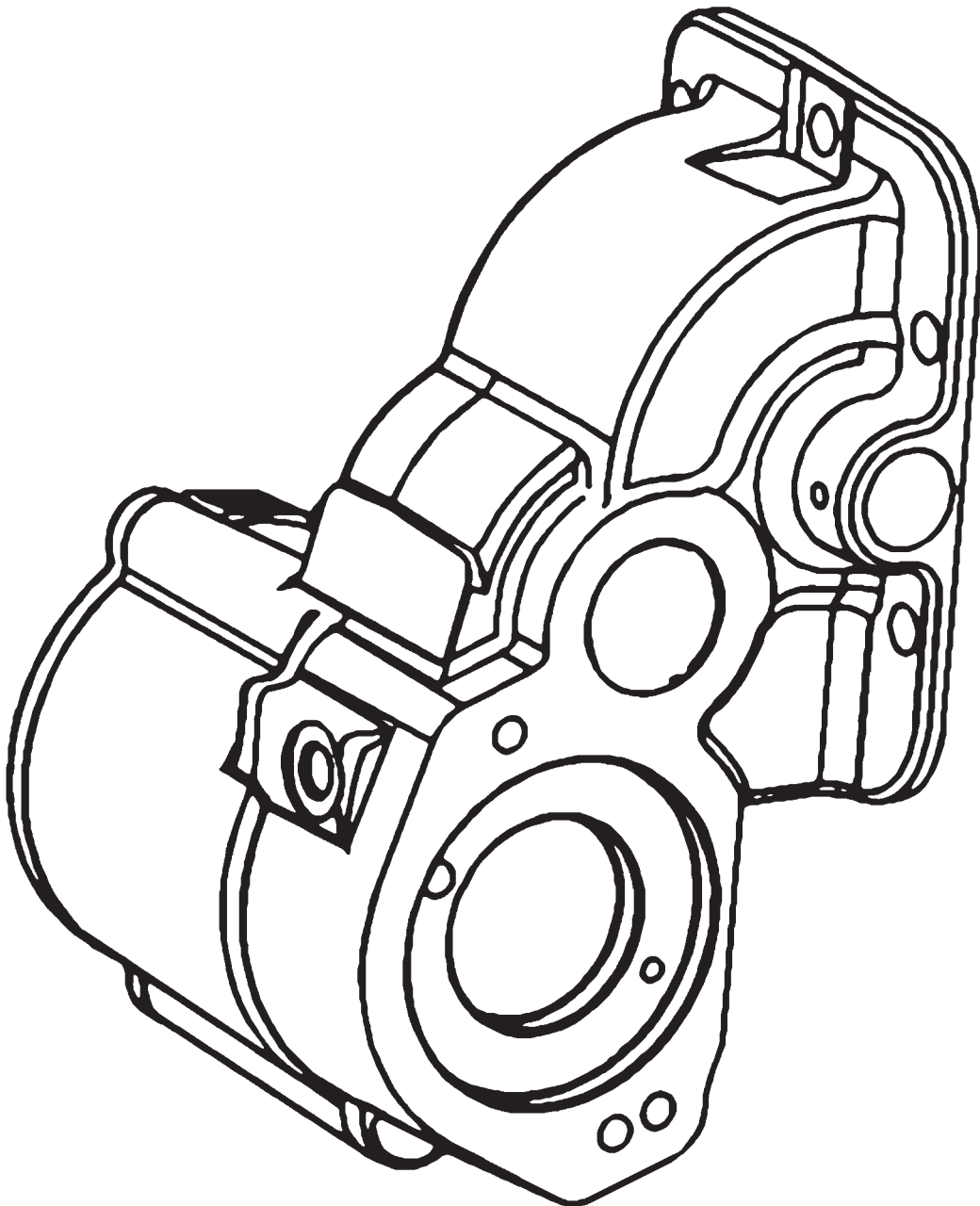




FR SERIES PTO

PARTS LIST AND SERVICE MANUAL

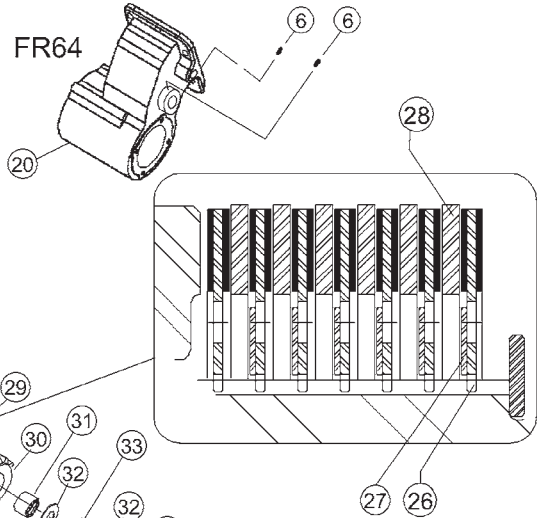
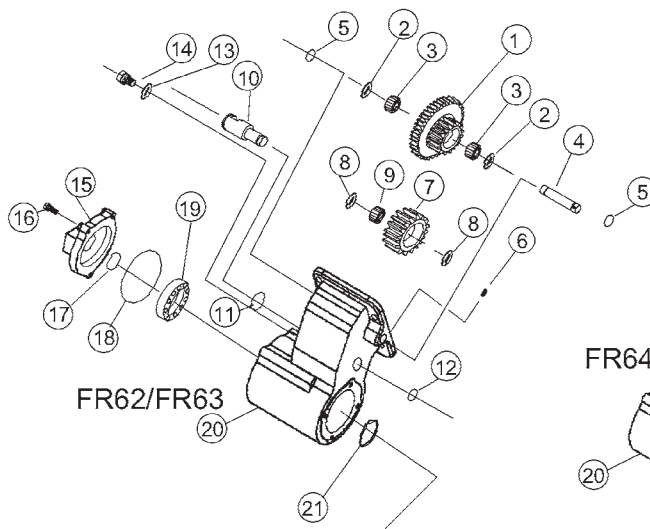
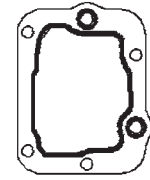


FR62/FR63/FR64 SERIES PTO EXPLODED VIEW

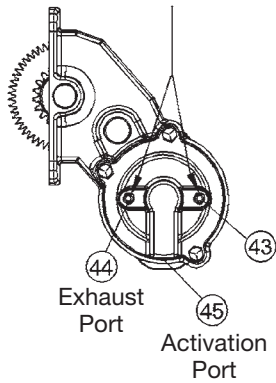
Gasket

Ford
Supplied

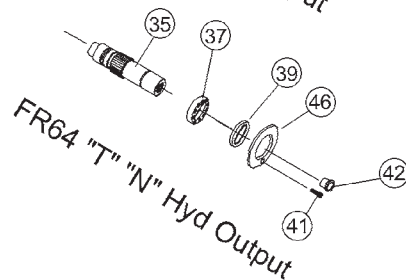
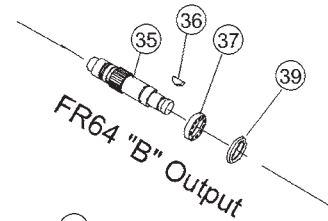
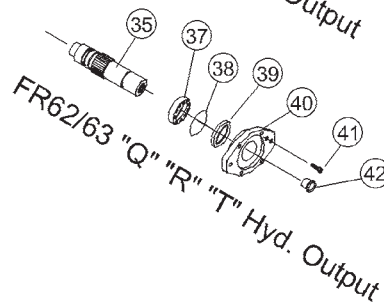
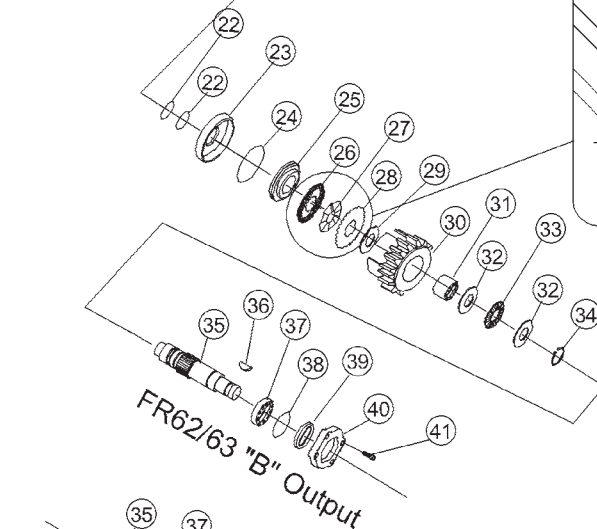
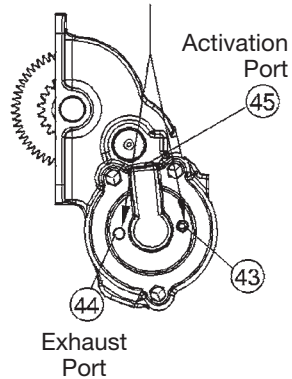
Reuse Gasket
Found on
Opening or Order
13T39089 Separately



FR62/FR63 Bearing Removal Location



FR64 Bearing Removal Location

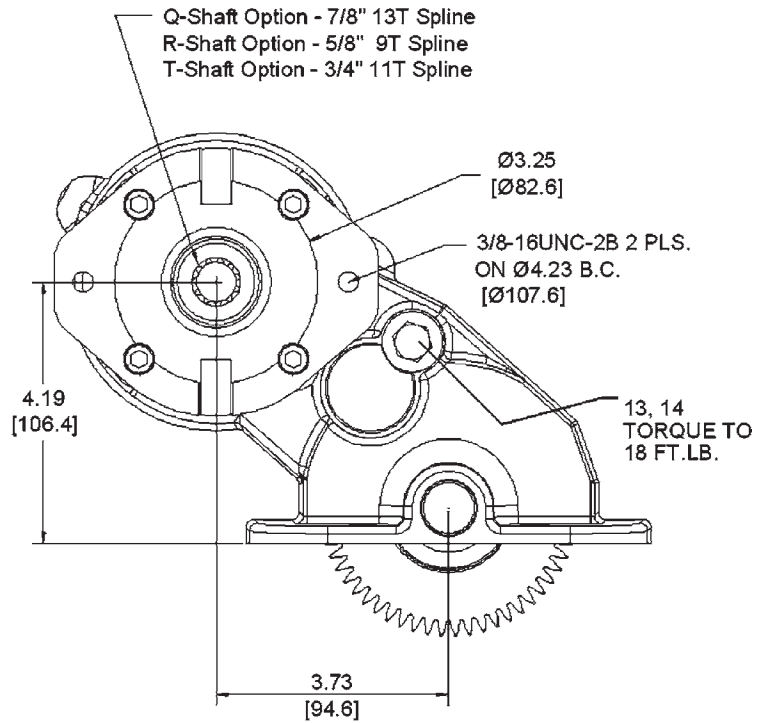
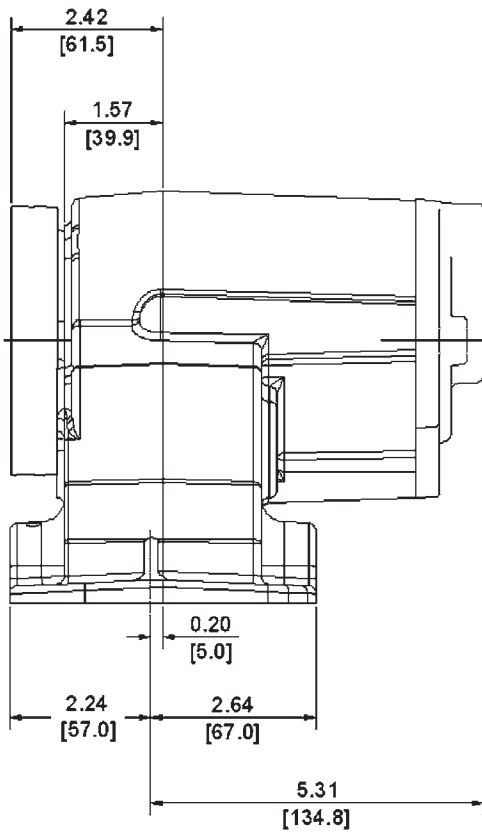
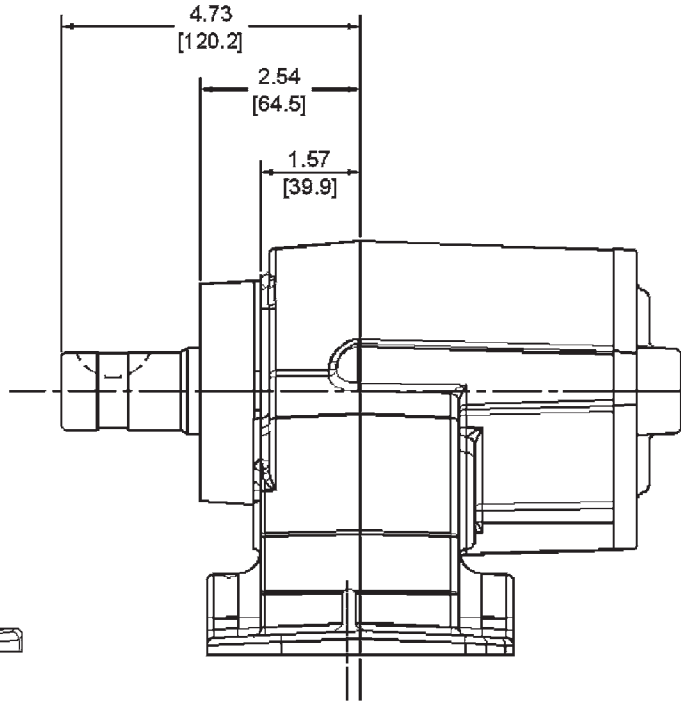
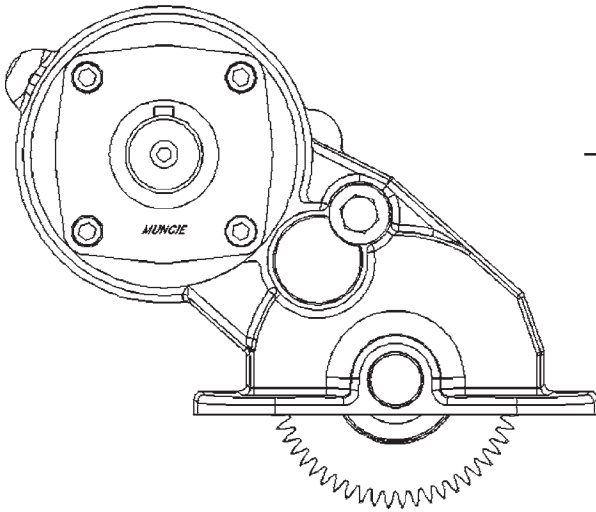


FR SERIES PARTS LIST AND DESCRIPTION

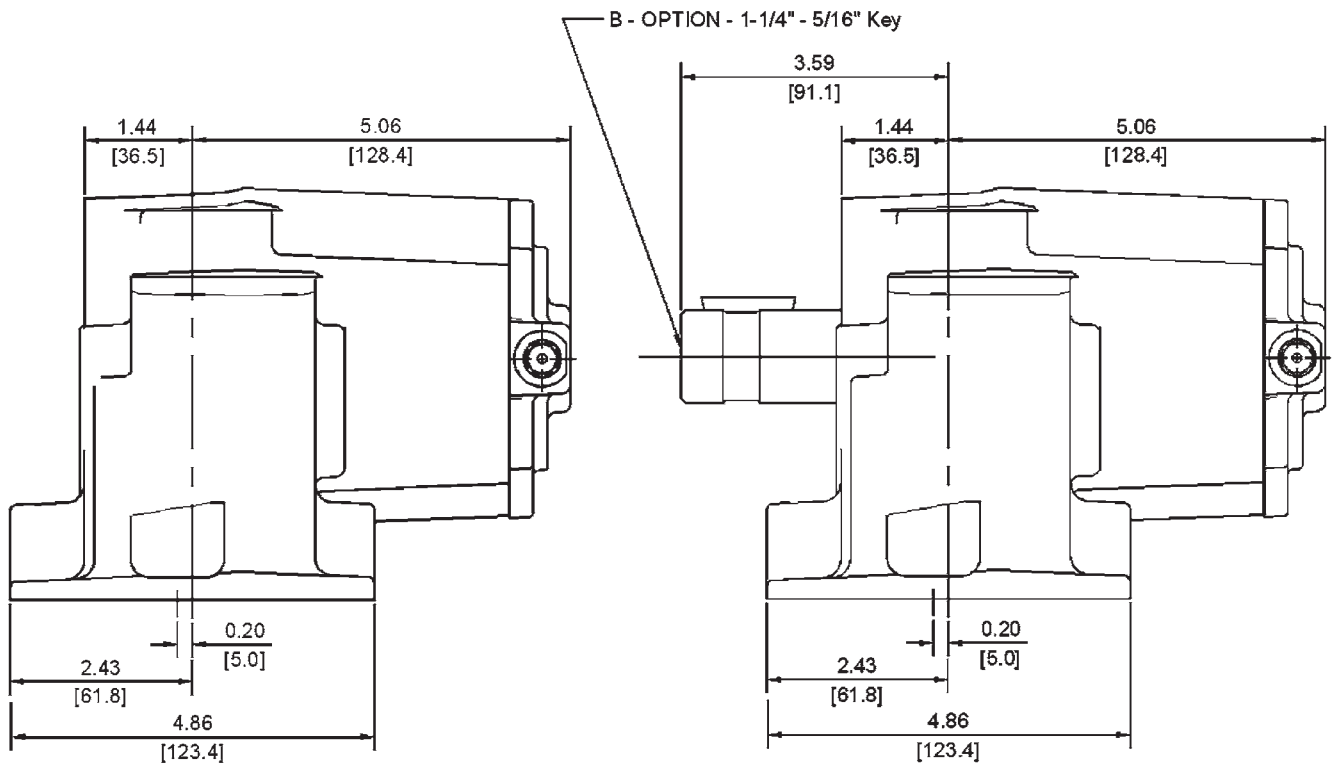
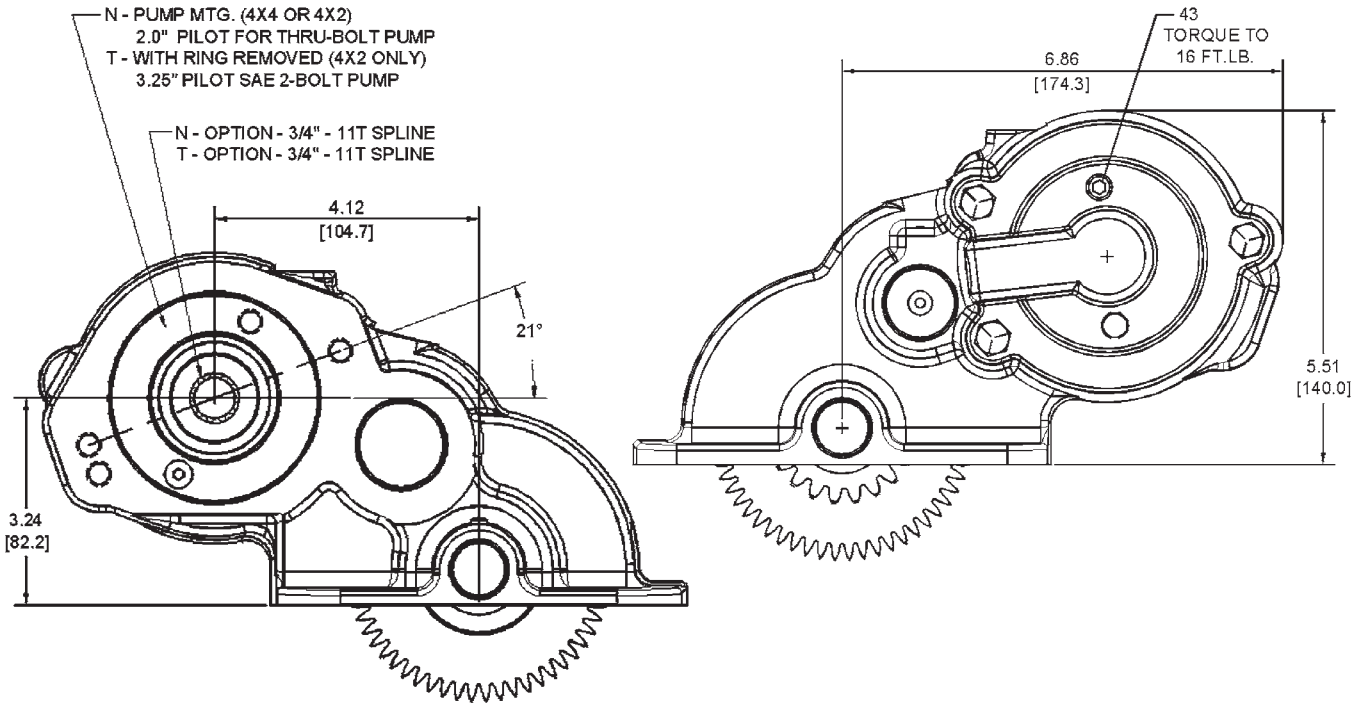
ITEM	QTY	PART NO.	PART NAME	MODEL	ITEM	QTY	PART NO.	PART NAME	MODEL
01	1	03T38904	Gear	FR62	31	1	10T37008	Bearing	FR62 FR64 FR63
		03T39073	Gear	FR64 FR63	32	2	21T29017	Washer	FR62 FR64 FR63
02	2	21T38956	Washer	FR62 FR64 FR63	33	1	10T37009	Bearing	FR62 FR64 FR63
03	2	10T34006	Bearing	FR62 FR64 FR63	34	1	24T35480	Snap Ring	FR62 FR64 FR63
04	1	07T38865	Shaft	FR62 FR64 FR63	35	1	06T39083	Shaft Output "B"	FR62
05	2	12T36879	O-Ring	FR62 FR64 FR63			06T38899	Shaft Output "T"	FR62
06	1	19T36249	Setscrew	FR62 FR63			06T38962	Shaft Output "R"	FR62
	2	19T34789	Setscrew	FR64			06T39138	Shaft Output "Q"	FR62
07	1	04T38903	Gear	FR62			06T39184	Hydraulic Shaft "N", "T"	FR64
		04T39180	Gear	FR64 FR63			06T39083	Output Shaft "B"	FR64
08	2	21T39086	Washer	FR62			06T39386	Shaft Output "B"	FR63
		21T39144	Washer	FR64 FR63			06T39387	Shaft Output "T"	FR63
09	1	10T29709	Bearing	FR62			06T39388	Shaft Output "R"	FR63
		10T39145	Bearing	FR64 FR63			06T39262	Shaft Output "Q"	FR63
10	1	08T38861	Shaft	FR62	36	1	25T35520	Caplug "R" Output Option	FR62 FR63
		08T39258	Shaft	FR63			25T37387	Caplug ("N", "T", "Q" Output)	FR62 FR64 FR63
		08T39075	Shaft	FR64			26T01627	Key ("B" Output)	FR62 FR64 FR63
11	1	12T36276	O-Ring	FR62	37	1	10T21017	Bearing	FR62 FR63
		12T36456	O-Ring	FR64 FR63			10T39147	Bearing	FR64
12	1	12T35949	O-Ring	FR62	38	1	12T36751	O-Ring	FR62 FR63
		12T35577	O-Ring	FR64 FR63	39	1	11T37790	Seal	FR62 FR64 FR63
13	1	21T38862	Washer	FR62 FR63	40	1	14T37344	Adapter "B" Output Option	FR62 FR63
14	1	19M10001	Bolt	FR62 FR63			14T39141	Adapter R, Q, T Output Option	FR62 FR63
15	1	15T38854	Cover	FR62	41	4	19T39257	Bolt	FR62 FR63
		15T39263	Cover	FR63	41	1	19T39031	Screw ("N" Output Only)	FR64
		15T39070	Cover	FR64	43	2	25T21684	Plug	FR62 FR64 FR63
16	3	19T32740	Bolt	FR62 FR64 FR63	44	2	25T34029	Caplug	FR62 FR64 FR63
17	1	12T36280	O-Ring	FR62 FR64 FR63	45	2	25T37702	Caplug	FR62 FR64 FR63
18	1	12T36279	O-Ring	FR62 FR63	46	1	14T39149	Adapter ("N" Output Only)	FR64
		12T37278	O-Ring	FR64					
19	1	10T37320	Bearing	FR62					
		10T39072	Bearing	FR64 FR63					
20	1	01T38852	Housing	FR62					
		01T39269	Housing	FR63					
		01T39060	Housing	FR64					
21	1	24T24314	Snap Ring	FR62					
		24T39182	Snap Ring	FR64 FR63					
22	2	12T39023	O-Ring	FR62 FR64 FR63					
23	1	49T39022	Cup	FR62 FR64 FR63					
24	1	12T36540	O-Ring	FR62 FR64 FR63					
25	1	49T38881	Piston	FR62 FR64 FR63					
26	7	49T36259	Friction Disc	FR62 FR64 FR63					
27	6	27T36286	Spring	FR62 FR64 FR63					
28	6	49T36258	Reaction Plate	FR62 FR64 FR63					
29	1	21T37085	Washer	FR62 FR64 FR63					
30	1	02T38900	Gear Output	FR62					
		02T39074	Gear Output	FR64 FR63					

FR62/FR63 SERIES DIMENSIONS IN INCHES (MM)

**"B" OUTPUT SHAFT
1-1/4 RD SHAFT, 5/16 KW**



FR64 SERIES DIMENSIONS IN INCHES (MM)



PARTS LIST - KITS INCLUDED WITH FR SERIES

SHIFT OPTIONS FOR VEHICLE MODEL YEARS 2003-2004

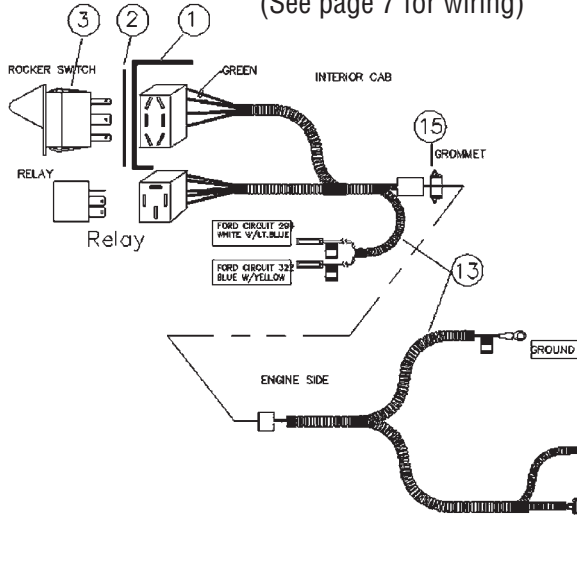
STANDARD SHIFT "H" OPTION KIT# 43TK4521

"Z" SHIFT OPTION KIT # 43TK4524

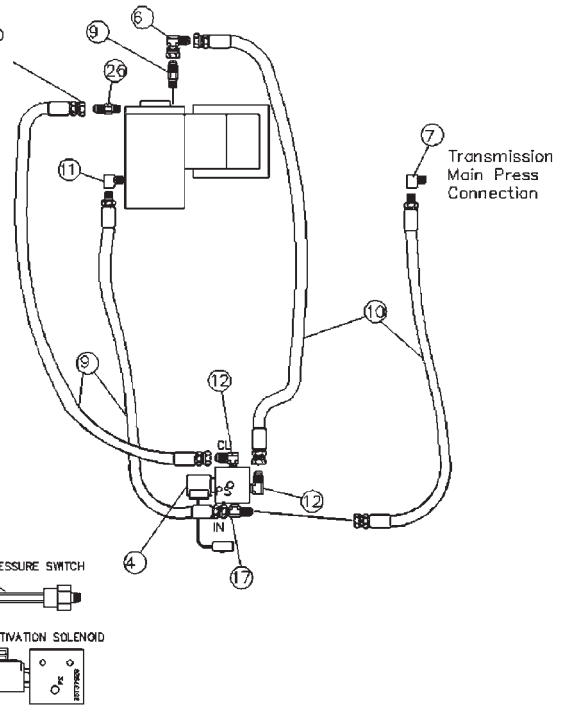
"Q" SHIFT OPTION KIT # 43TK4593

"D" OR "G" SHIFT OPTION KIT # 43TK4697

(See page 7 for wiring)



ITEM 6 USED
HERE AS
NEEDED.



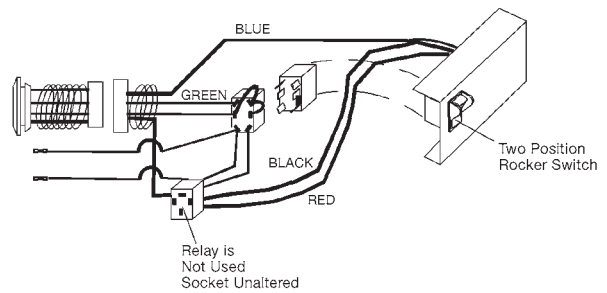
ACTIVATION KIT

ITEM	QTY	PART NO.	DESCRIPTION
01	1	36MA1005	Switch Bracket (H, Z Option)
02	1	36T36271	Face Plate (H, Z Option)
03	1	30T37620	Rocker Switch 12V (H Option)
		30T35687	Rocker Switch 12V (Z, D, G Option)
		N.R.	"Q" Option (No Switch)
04	1	35T37928	12V Solenoid Valve Block
05	1	30T37954	Pressure Switch
06	2	43T36445	JIC Elbow
07	1	44MB0222	NPT Elbow
08	1	43T37503	JIC Adapter
09	2	45T36274	Hose Assembly 28" (Jic - Jic)
10	2	45M4R528	Hose Assembly 28" (Npt - Jic)
11	1	43T37385	Orifice Elbow
12	2	43M68014	JIC Fitting 90
13	1		See Wiring Harness Chart Below
15	1	37T35674	Rubber Grommet
17	1	43T36231	Tee Fitting
N.S.	2	19T36623	Cap Screw, Solenoid Mtg.
N.S.	2	22T35140	Nut, Solenoid Mtg.
N.S.	2	21T37991	Lock Washer, Solenoid Mtg.
26	1	43T36431	ODT/JIC Adapter
N.S.	6	28T35442	Cable Ties
N.S.	1	36MK1007	Bolt Kit, Switch Bracket
13	1	34T39032	Harness (H) Shift Option
		34T39599	Harness (Q) Shift Option
		34T39185	Harness (Z) Shift Option
		34T39852	Harness (D) Shift Option
		34T39851	Harness (G) Shift Option
	1	37T37621	Relay Shown Incl. in Harness 34T39032

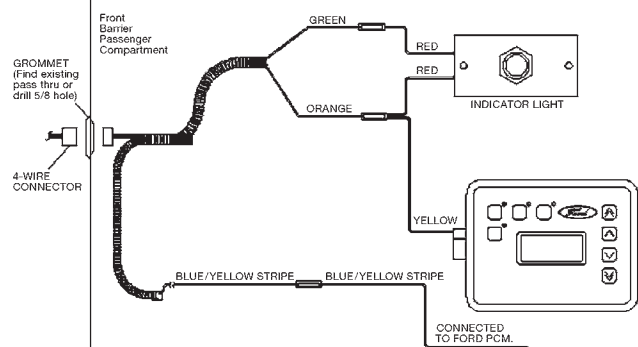
Wiring Harness Required

Harness (H) Shift Option
 Harness (Q) Shift Option
 Harness (Z) Shift Option
 Harness (D) Shift Option
 Harness (G) Shift Option

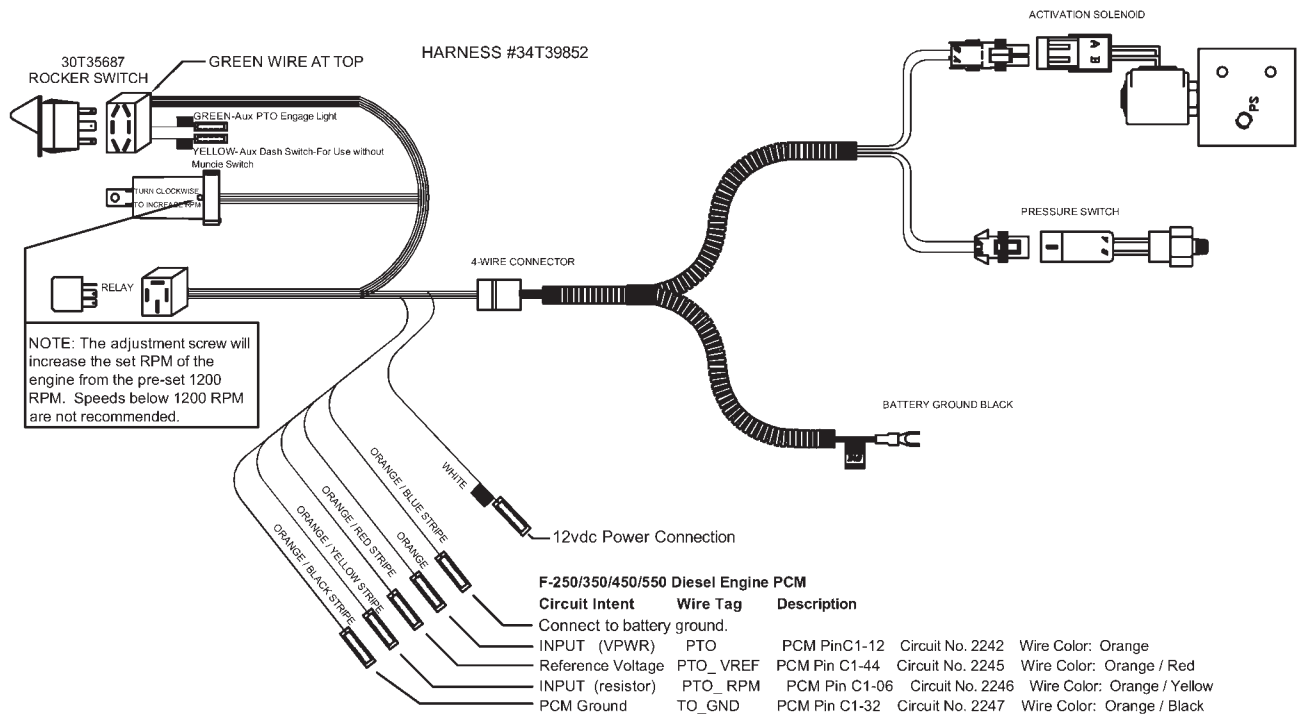
Z SHIFT OPTION (2003-2004)



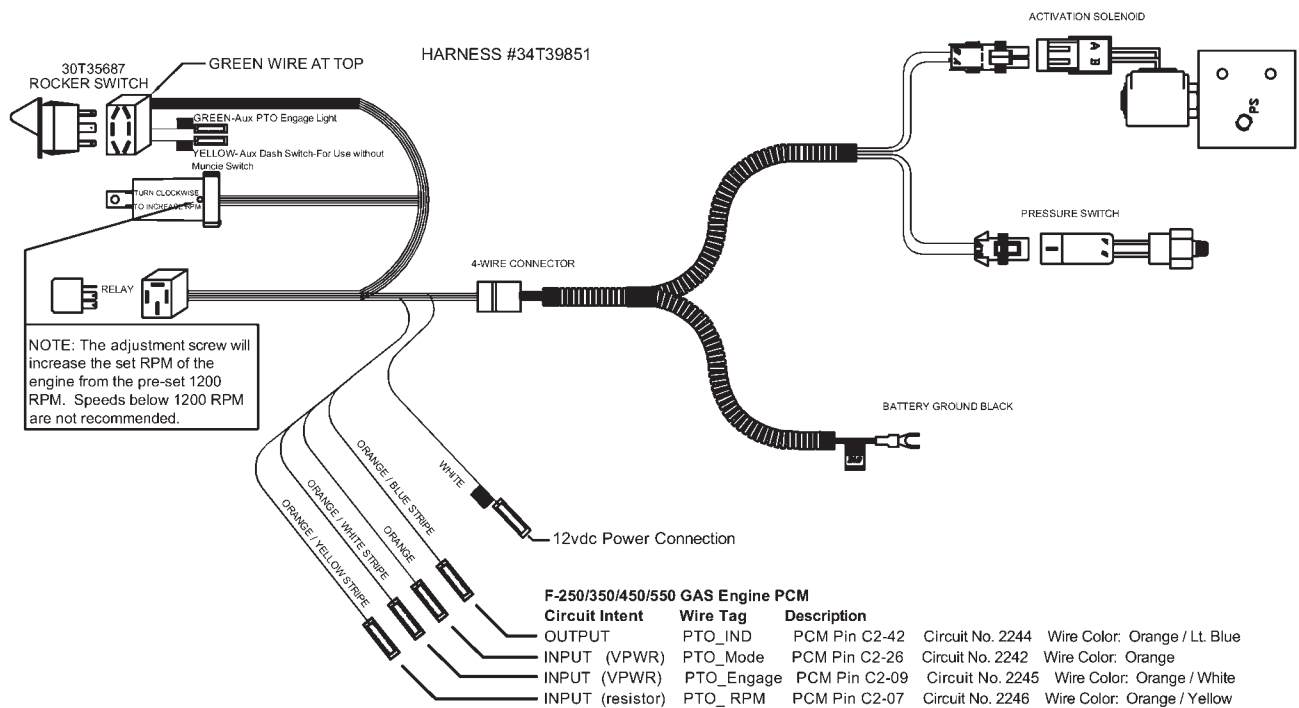
Q SHIFT OPTION (2003-2004)



FORD 2005 AND LATER - DIESEL ENGINE FR SERIES "D" SHIFT OPTION HARNESS



FORD 2005 AND LATER - GAS ENGINE FR SERIES "G" SHIFT OPTION HARNESS



MODEL NUMBER CONSTRUCTION

FR 64 — F15 06 — H 4 T X

PTO Type

Ford Automatic — FR

Mounting

SAE 6 Bolt Mount 4x2 Chassis — 62
 SAE 6 Bolt Mount 4x2 Chassis — 63
 SAE 6 Bolt Mount 4x4 Chassis — 64

Trans. FA Gear Data

Ford 14.23P 17.9°PA 18° LH — F15

Speed Ratio

06 — .62:1

Shifter Type

Electric/Hydraulic (12 Volt) (2003-04) — H
 APCM Option (2003-04) — Q
 Special 2 Pos Switch (2003-04) — Z
 Std 2005 (Diesel Eng) — D
 Std 2005 (Gas Eng) — G

Special Feature

X — None

Output Type

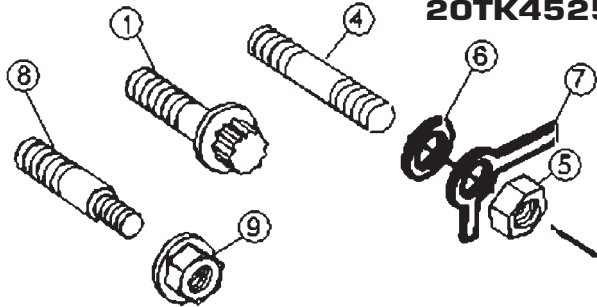
B — 1-1/4 Round 5/16 KW
 N — 3/4 - 11 Spl. - Special (FR64)
 Q — 7/8 - 13 Spl. (FR62/63)
 R — 5/8 - 9 Spl. - 2 Bolt "A" (FR62/63)
 T — 3/4 - 11 Spl. - 2 Bolt "A"
 W — 3/4 - 11 Spl. - 2 Bolt "A"
 (Tandem Pump) (FR62/63)

Assembly Arrangement

4 (FA62/63/64)

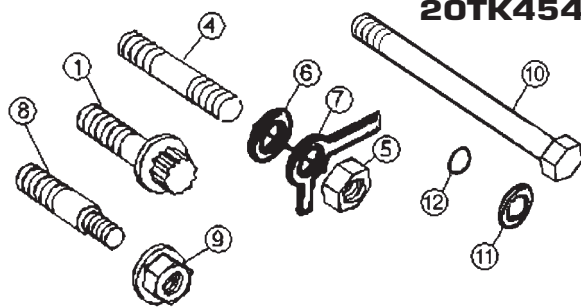
FR SERIES STUD KITS

FR62/FR63 Series STUD KIT 20TK4525



ITEM	QTY	PART NUMBER	DESCRIPTION
01	3	19T37727	Capscrew, 12-Point (Metric)
04	2	20T37914	Stud
05	2	22MX3824	Nut
06	2	13M18018	Copper Washer
07	2	21MX3802	One-Hole Locking Tab
08	1	20T37952	Stud
09	1	22T37605	Nut

FR64 Series STUD KIT 20TK4542



ITEM	QTY	PART NUMBER	DESCRIPTION
01	2	19T37727	Capscrew, 12-Point (Metric)
04	2	20T37914	Stud
05	2	22MX3824	Nut
06	2	13M18018	Copper Washer
07	2	21MX3802	One-Hole Locking Tab
08	1	20T37952	Stud
09	1	22T37605	Nut
10	1	19T39146	Capscrew
11	1	21T36448	Washer
12	1	12T36881	O-Ring

INSTRUCTION PACKET FOR ALL FR SERIES • 52TK4522

ITEM	QTY	PART NUMBER	DESCRIPTION
1	2	36M35644	Frame Label
2	1	36T37507	Visor Label
3	1	36T35652	Dash Label
4	1	IN03-01	PTO Installation and Owner's Manual



SP04-03 (Rev. 2-05) Printed in the U.S.A.
 © Muncie Power Products, Inc. 2005

Muncie Power Products, Inc. Member of the Interpump Hydraulics Group
 General Offices and Distribution Center • P.O. Box 548 • Muncie, IN 47308-0548
 (765) 284-7721 • FAX (765) 284-6991 • E-mail info@munciepower.com
 Web site http://www.munciepower.com

Drive Products, Inc., Toronto, Exclusive Agents for Canada, ISO Certified by an Accredited Registrar

