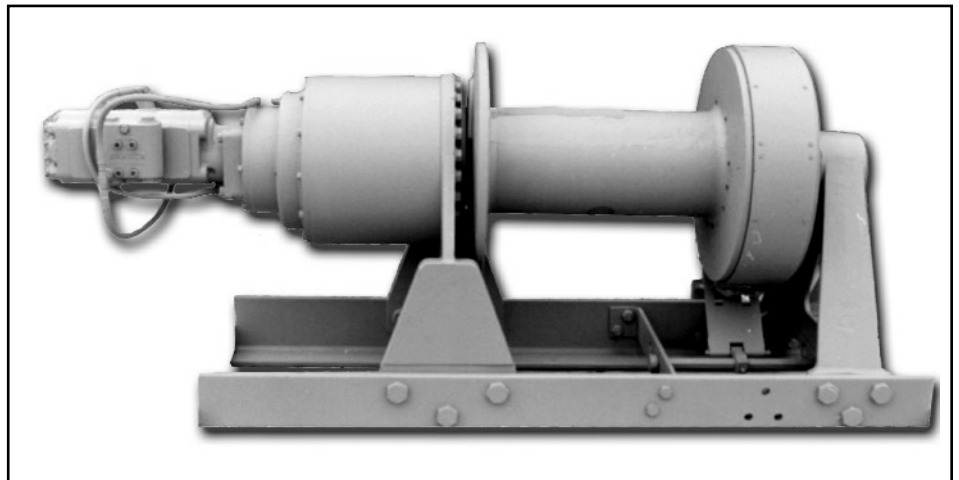


BRADEN®

MATERIAL LIST

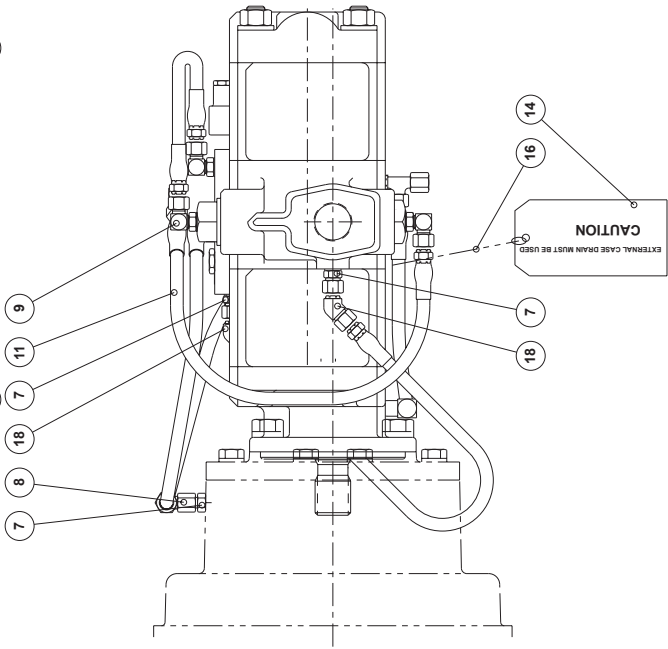
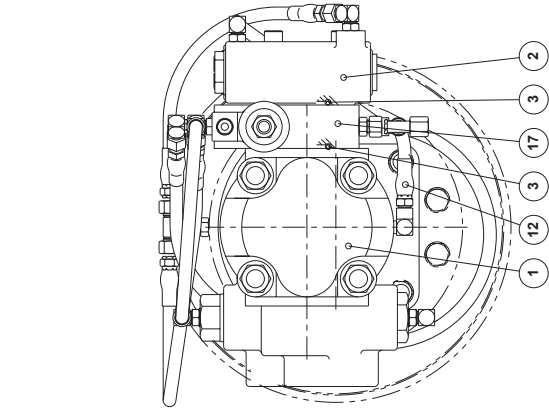
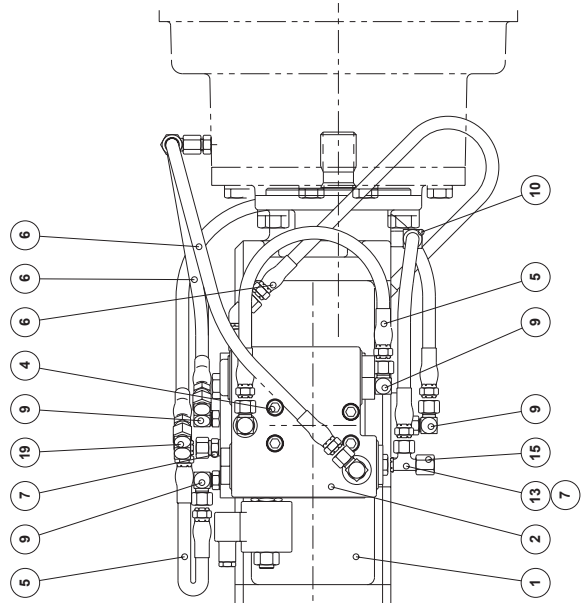
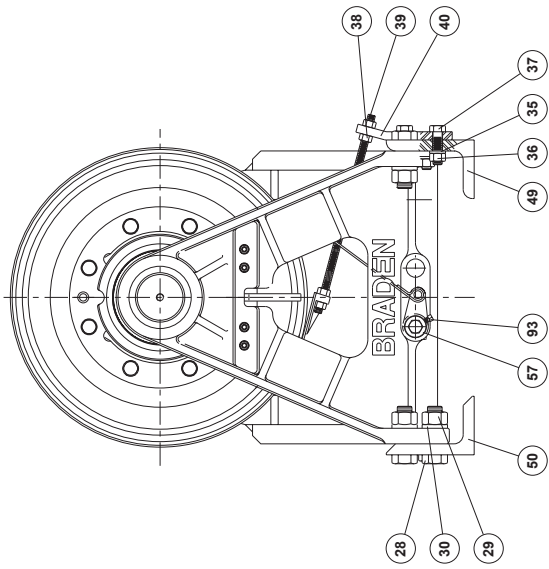
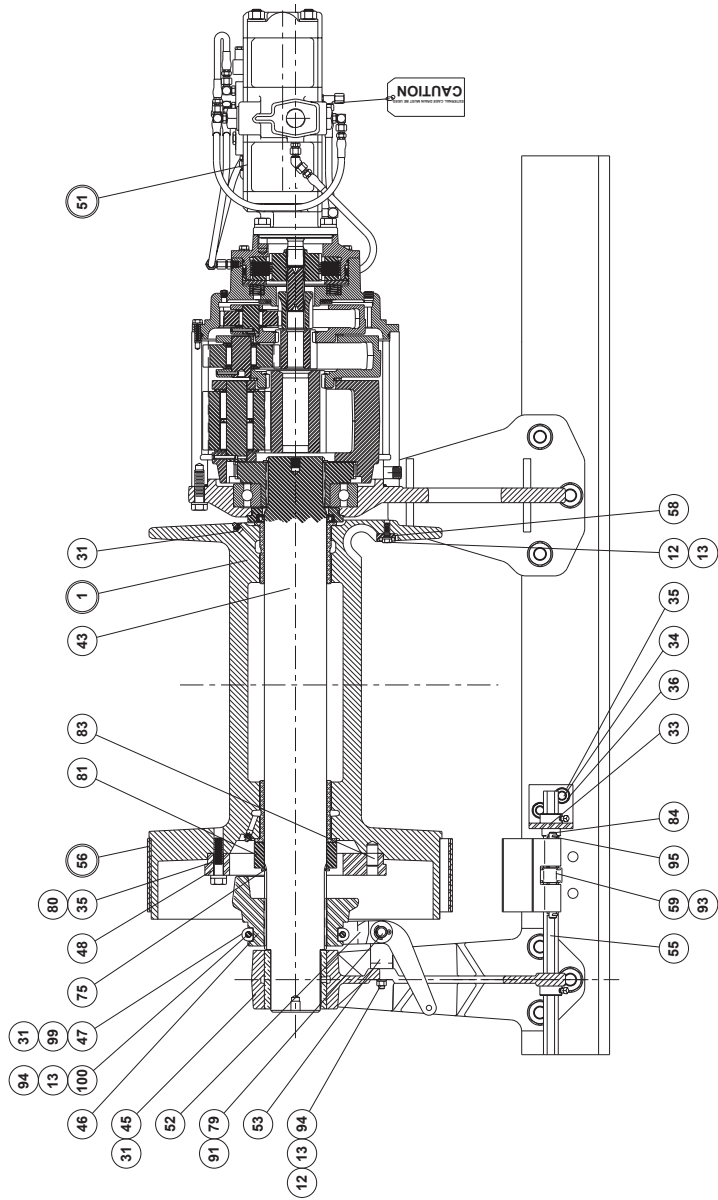
HP125



Copyright 2001
PACCAR Winch Division
Printed in U.S.A.

LIT2009 R1
February 2001

PACCAR WINCH DIVISION
P.O. BOX 547 BROKEN ARROW, OK U.S.A. 74013
PHONE (918) 251-8511 FAX (918) 259-1575
www.paccarwinch.com

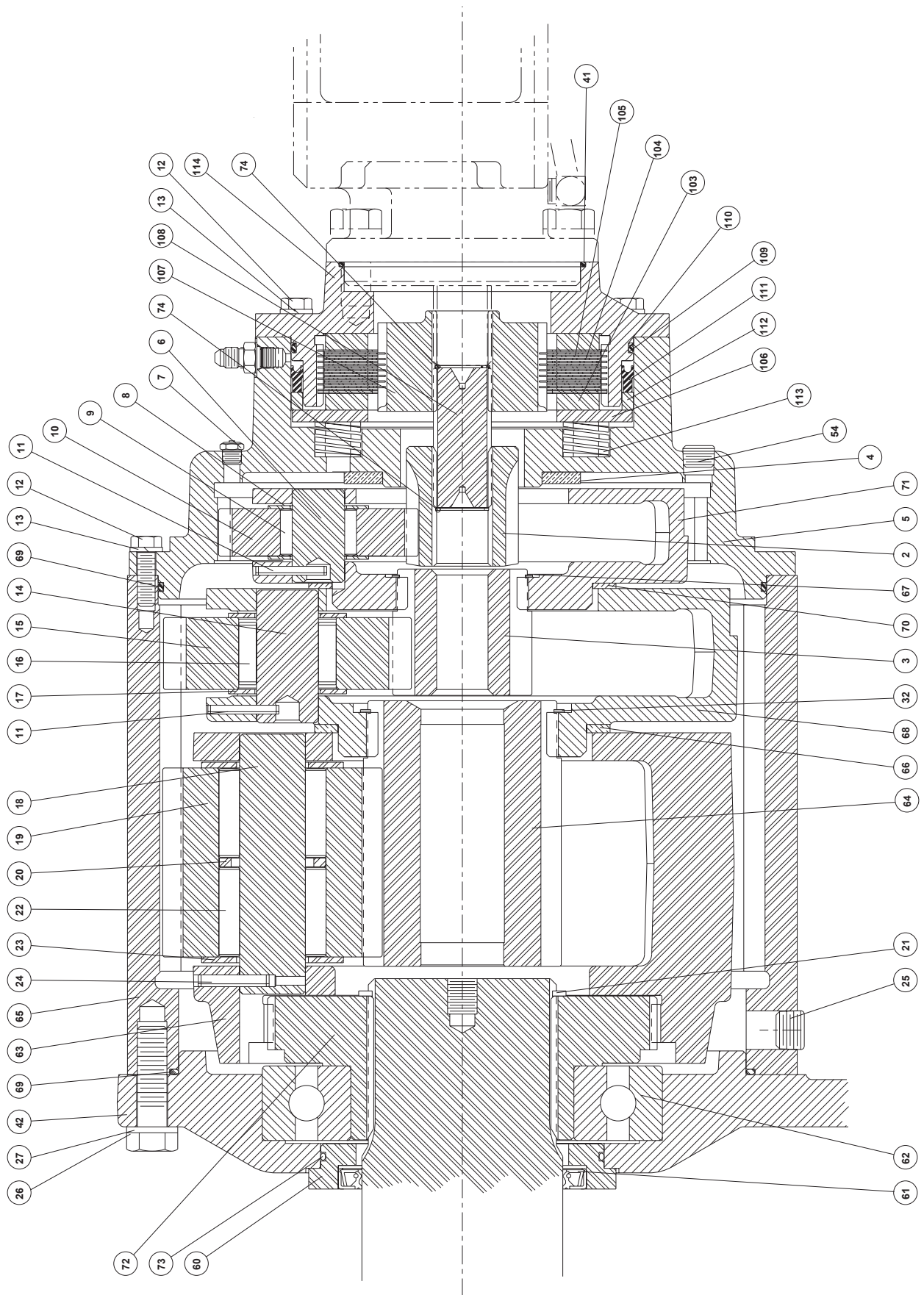


BASE WINCH

ITEM	DESCRIPTION	PART NO.	QTY.
1	CABLE DRUM ASSY	101634	1
12	CAPSCREW	11776	6
13	LOCKWASHER	18003	8
28	BOLT	22884	12
29	NUT-HEAVY	22887	12
30	LOCKWASHER	13986	12
31	GREASE FITTING	18047	4
33	SUPPORT BRACKET	11668	1
34	CAPSCREW	22699	4
35	LOCKWASHER	11028	15
36	NUT-HEX	22702	17
37	CAPSCREW	11475	3
38	NUT-HEX	22701	8
39	BRAKE BAND LINK	11652	2
40	BRACKET	12789	1
43	CABLE DRUM SHAFT	101637	1
45	BEARING LEG WITH BUSHING	81039	1
46	BUSHING (NOT SHOWN)	12876	1
46	CLUTCH	101638	1
47	CLUTCH RIDER	11671	1
48	CLUTCH PLATE	11259	1
49	BASE ANGLE	101639	1
50	BASE ANGLE	101640	1
51	HYD MOTOR SUB-ASSY	63215	1
52	CLUTCH SHIFTER FORK	11673	1
53	SHIFTER FORK BRACKET	11656	2
55	CONTROL SHAFT	24658	1
56	BRAKE BAND ASSY	81591	1
57	HEX SHAFT BUSHING	11669	2
58	CABLE ANCHOR RETAINING PLATE	101950	1
59	BRAKE LEVER	11678	1
79	CLUTCH SHIFTER PIN	11657	1
80	CAPSCREW	13982	8
81	SPACER	101882	1
83	DOWEL PIN	12769	2
84	BRAKE BAND PIN	12773	1
91	COTTER PIN	13959	1
93	CUP POINT SETSCREW	13957	3
94	NUT-HEX	11780	6
95	COTTERPIN	18008	2
99	CLUTCH RIDER	11672	1
100	CAPSCREW	21477	2
115	CABLE FERRULE (NOT SHOWN)	29429	1

Motor Sub-Assembly

ITEM	DESCRIPTION	PART NO.	QTY.
1	HYD MOTOR, 2-SPEED	25651	1
2	BRAKE VALVE ASSY - 1	81984	1
3	O-RING	13838	2
4	CAPSCREW *	102476	4
5	HOSE ASSY	25936	1
6	HOSE ASSY	25750	3
7	ADAPTER	25864	5
8	SWIVEL TEE	25748	1
9	ELBOW FITTING	25302	6
10	REDUCER ELBOW	24236	1
11	HOSE ASSY	25952	1
12	HOSE ASSY	13711	1
13	SWIVEL TEE	26002	1
14	WARNING TAG	29080	1
15	16445-4 CAP NUT	70182	1
16	.035 SOFT STEEL WIRE	94058	as req'd.
17	MANIFOLD	102922	1
18	16184-44 MALE UNION	70122	2
19	SWIVEL NUT 90 DEG ELBOW	26140	1

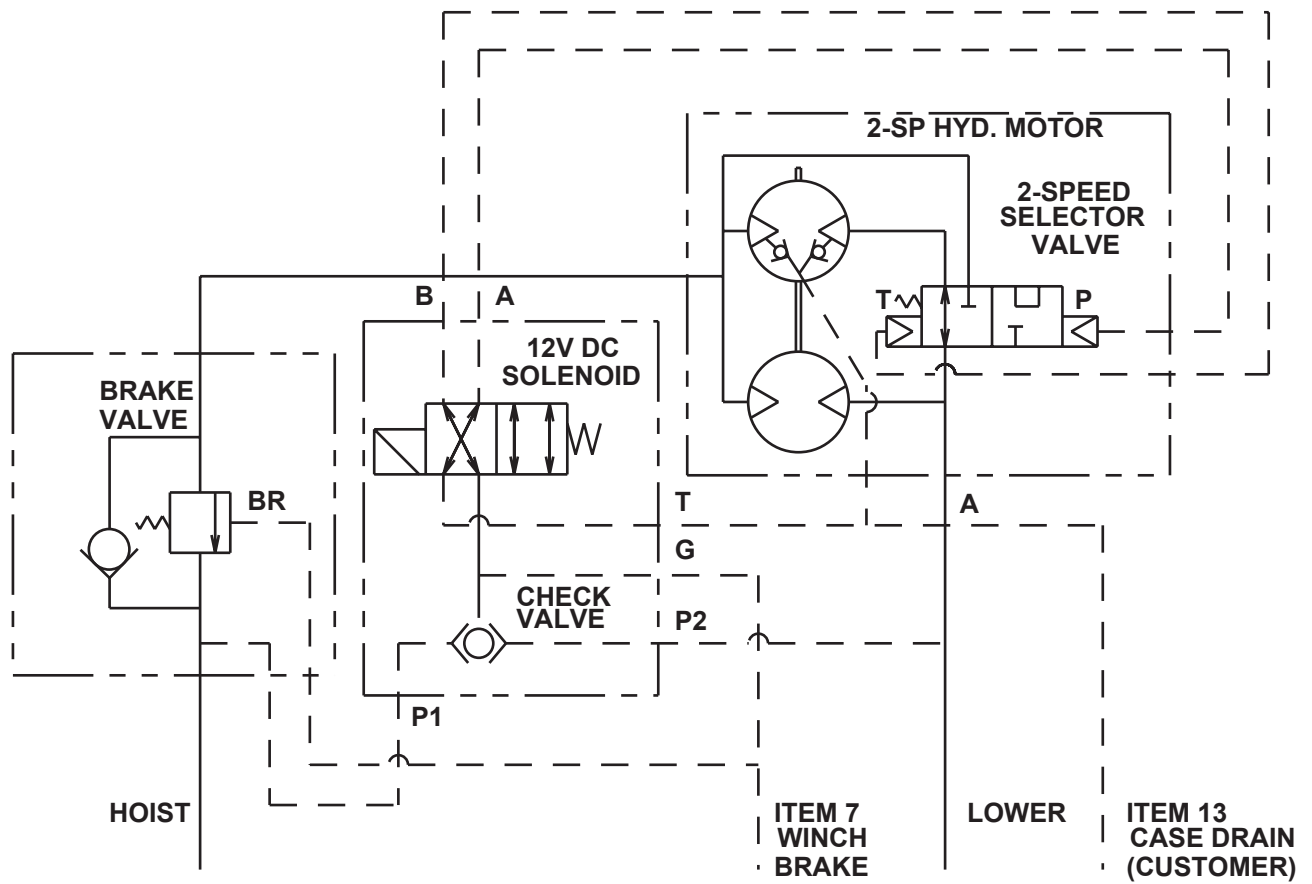


Winch Drive

2	GEAR, PRIMARY SUN	100523	1
3	GEAR, SECONDARY SUN	40097	1
4	THRUST WASHER	11571	1
5	GEAR, PRIMARY RING	101635	1
6	PIN, PRIMARY PLANET	28731	3
7	VENT PLUG	18062	1
8	THRUST WASHER	28742	6
9	ROLLER	28859	51
10	GEAR, PRIMARY PLANET	40092	3
11	ROLLPIN	18057	6
12	CAPSCREW	11776	18
13	LOCKWASHER	18003	18
14	PIN, SECONDARY PLANET	27923	3
15	GEAR, SECONDARY PLANET	40096	3
16	ROLLER	27911	42
17	THRUST WASHER	28729	6
18	PIN, FINAL PLANET	29126	3
19	GEAR, FINAL PLANET	29094	3
20	SPACER, BEARING	29129	3
21	RETAINING RING	100931	1
22	ROLLER	29001	78
23	WASHER, THRUST	29128	6
24	ROLLPIN	18055	3
25	PLUG	19045	1
26	CAPSCREW	31087	24
27	WASHER, HARDENED	100052	24
32	RING, EXTERNAL RETAINING	28736	1

Winch Drive cont.

41	O-RING	10330	1
42	END BRACKET	101636	1
54	PLUG	23095	1
60	SEAL CARRIER	101711	1
61	SEAL	103062	1
62	BEARING, BALL	101706	1
63	CARRIER, FINAL PLANET	29125	1
64	GEAR, FINAL SUN	29095	1
65	RING GEAR	100897	1
66	THRUST WASHER	28730	1
67	RETAINING RING	76209	1
68	CARRIER, SECONDARY PLANET	27930	1
69	O-RING	72801	2
70	THRUST WASHER	28728	1
71	CARRIER, PRIMARY PLANET	40094	1
72	OUTPUT ADAPTER	101641	1
73	O-RING	24981	1
74	RETAINING RING	24506	2
75	RETAINING RING	101884	1
103	BRAKE PLATE SPACER	24489	2
104	BRAKE DISC	24490	10
105	FRICTION DISC	25530	7
106	SPRING PLATE	25719	1
107	BRAKE COUPLING	29432	1
108	GEAR, PRIMARY SUN	101707	1
109	O-RING	22357	1
110	BACK-UP WASHER	77278	1
111	SEAL-U CUP	25724	1
112	PISTON BACK-UP RING	25746	1
113	DIE SPRING	25723	12
114	MOTOR ADAPTER	101633	1



**2 SPEED HYD. MOTOR SUB-ASSY
CONTROL CIRCUIT
("A" PORT TOWARD FLANGE)**

NOTES:

1. MAX HYD PRESSURE 3000 P.S.I.
2. HYDRAULIC SOLENOID 12 VDC.